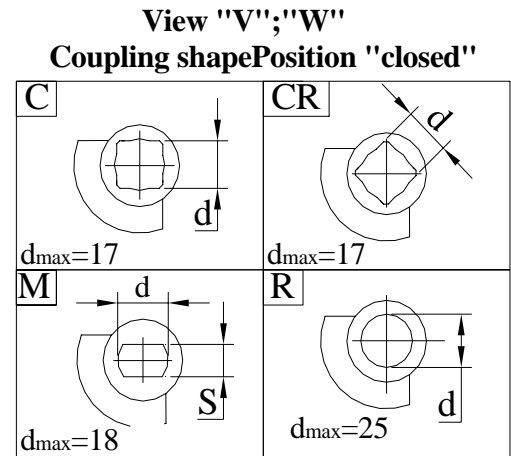
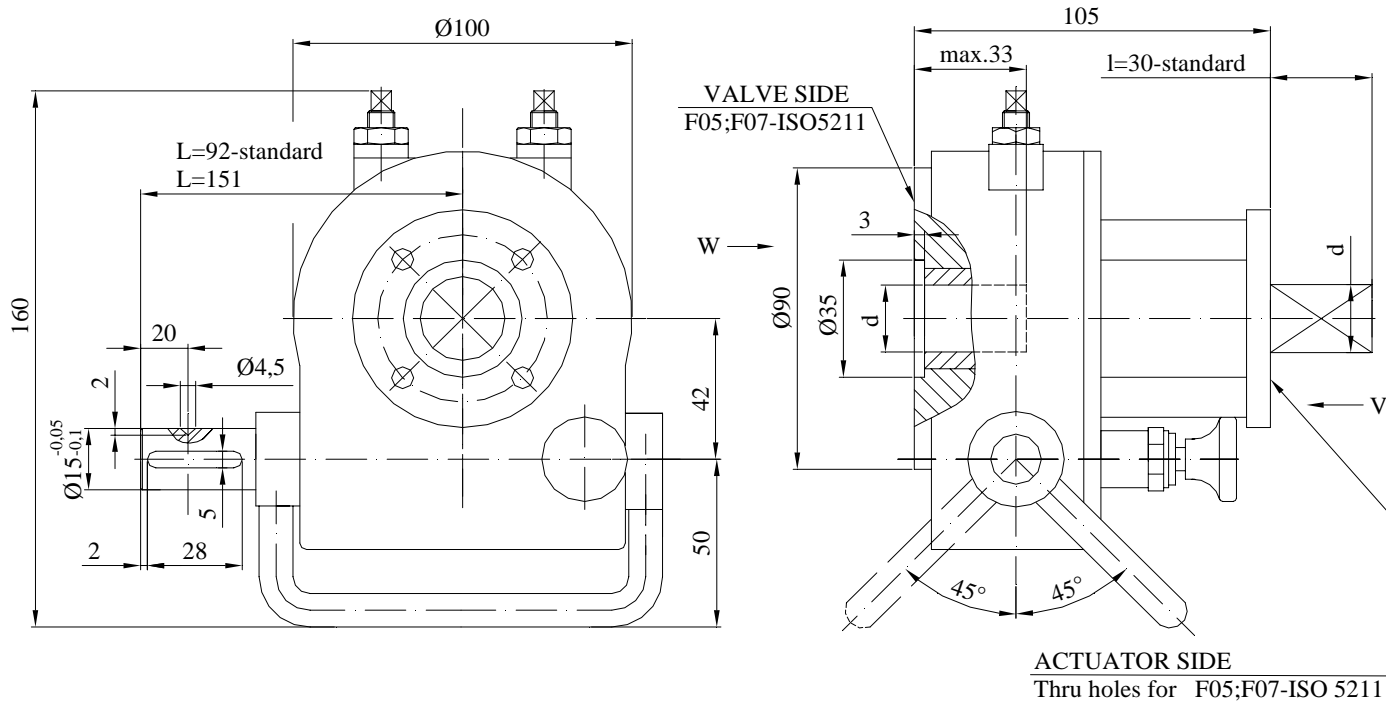


# DECLUTCHABLE "1/4-TURN" –ACTUATOR RMD 0A

Sheet nr.	614b
Date	05.03.2003



Alluminium Handwheel - 140-standard  
Should be ordered separately

### TECHNICAL FEATURES:

- Output rated torque.....125 Nm
- Input torque.....8,8 Nm
- Ratio.....41
- Output angular stroke.....90°±5°
- Handwheel turns for a complete stroke....10,25
- Capsulation.....IP 65
- Materials acc.to Specification nr.128

### ORDERING CODE:

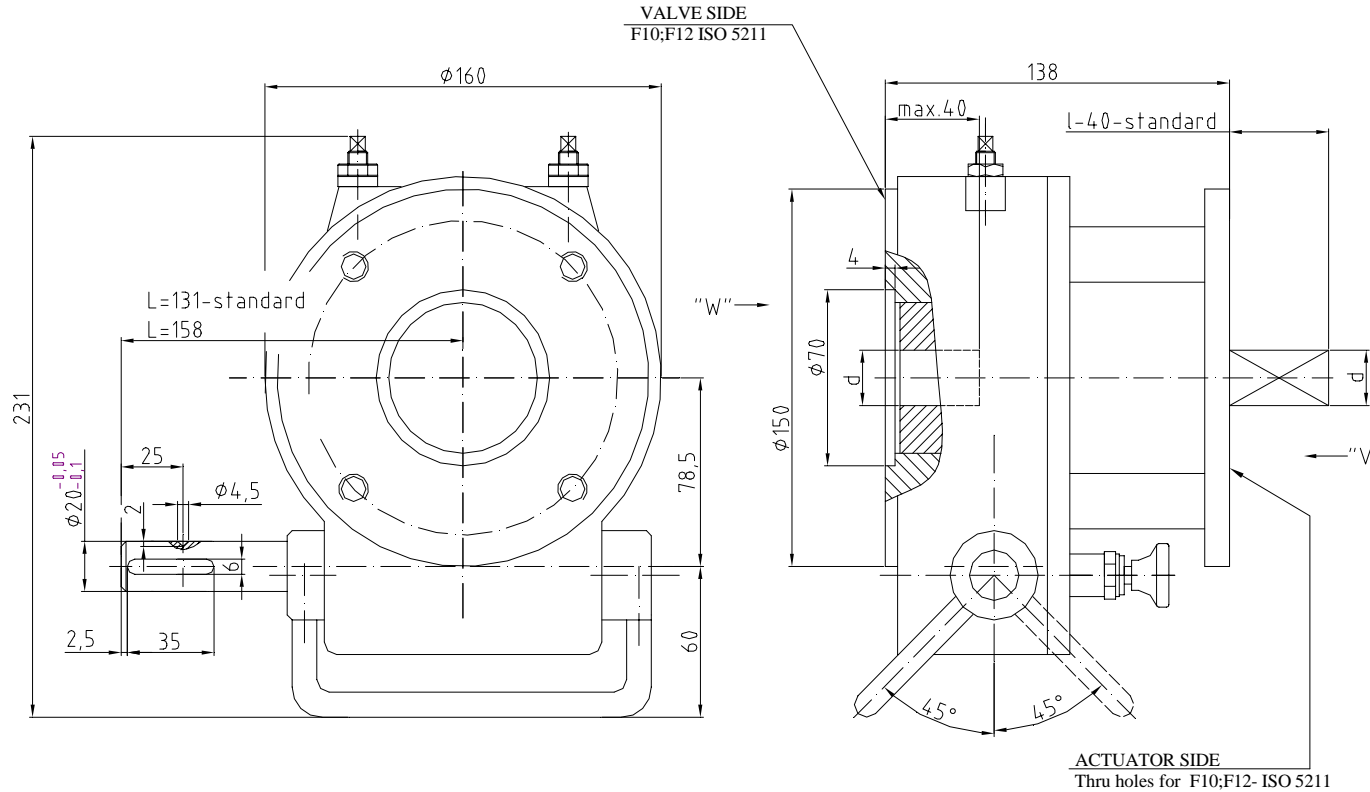
<b>RMD-0A</b>	x	<b>F07</b>	-	<b>C15</b>	/	<b>F05</b>	-	<b>C15</b>	x	<b>30</b>	-	<b>92</b>
Type		Valve side ISO 5211		d-Valve coupling shape		d-Coupling shape & dim. –actuator side		L-Shaft length		I-length		Thru holes for actuator side ISO 5211



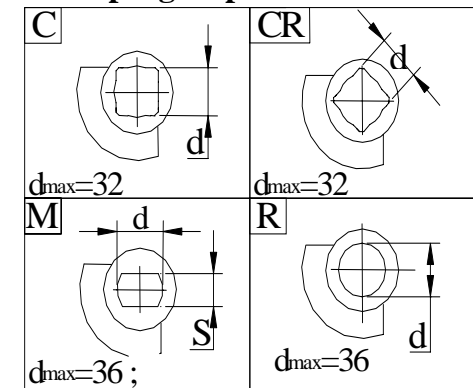
# DECLUTCHABLE "1/4-TURN" -ACTUATOR RMD 2A



Sheet nr.	616b
Date	05.03.2003



View "V"; "W"  
Coupling shape Position "closed"



Alluminium Handweel Ø225-Standard  
Should be ordered separately

## TECHNICAL FEATURES:

- Output rated torque.....800 Nm
- Input torque.....55 Nm
- Ratio.....48
- Output angular stroke.....90°±5°
- Handwheel turns for a complete stroke....10,25
- Capsulation.....IP 65
- Materials acc.to Specification nr.128

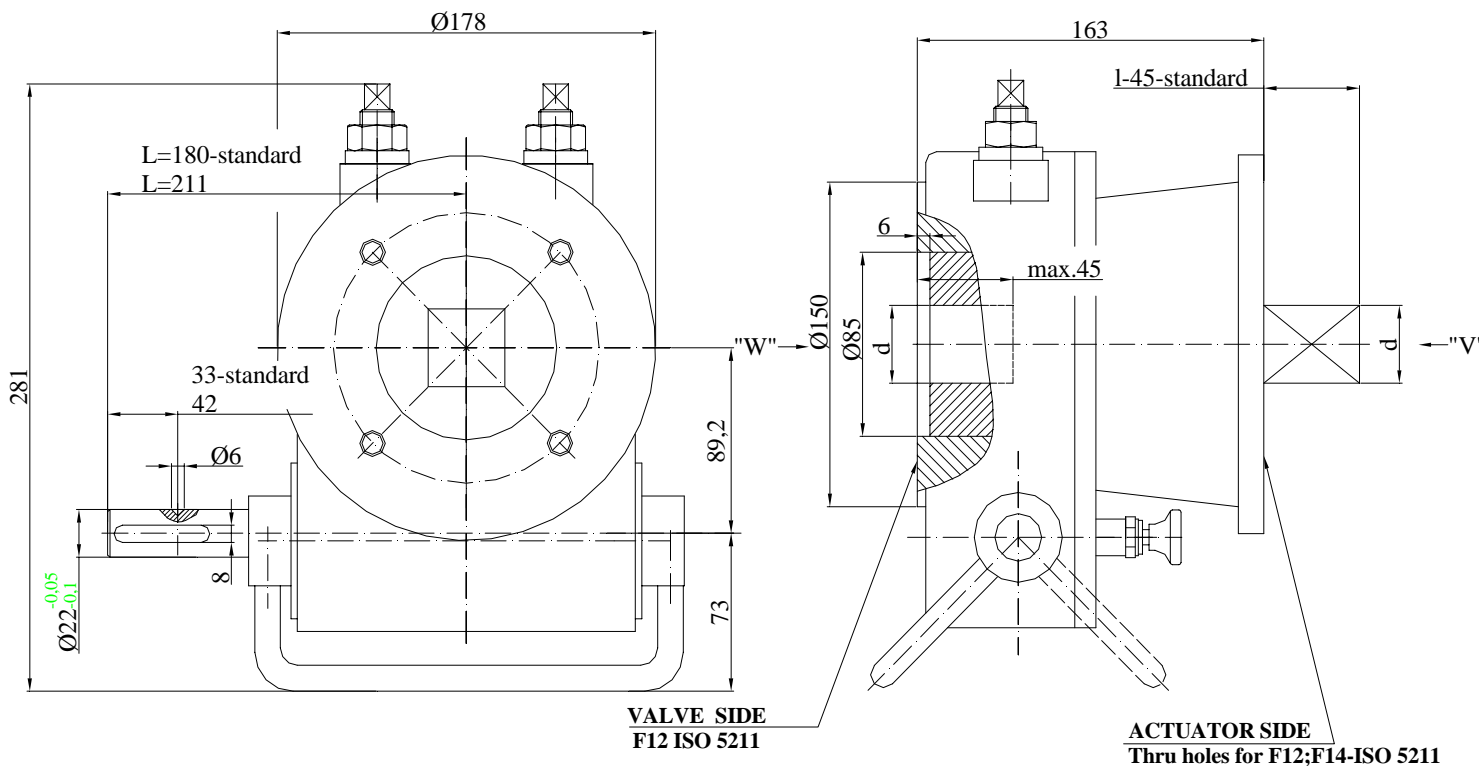
## ORDERING CODE:

<b>RMD-2A</b>	x	<b>F12</b>	-	<b>C25</b>	/	<b>F10</b>	-	<b>C25</b>	x	<b>40</b>	-	<b>131</b>
Type		Valve side ISO 5211		d-Valve coupling shape		L-Shaft length		I-length		d-Coupling shape & dim. -actuator side		Thru holes for actuator side ISO 5211

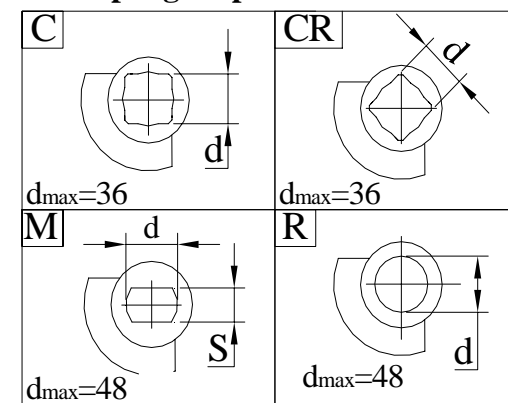
# DECLUTCHABLE "1/4-TURN" -ACTUATOR RMD 3A



Sheet nr.	617b
Date	05.03.2003



View "V"; "W"  
Coupling shape Position "closed"



Hand wheel - A450-standard;  
-A350  
*Should be ordered separately*

## TECHNICAL FEATURES:

- Output rated torque.....1150 Nm
- Input torque.....75 Nm
- Ratio.....49
- Output angular stroke.....90°±5°
- Hand wheel turns for a complete stroke....10.25
- Capsulation.....IP 65
- Materials acc. to. Specification nr.128

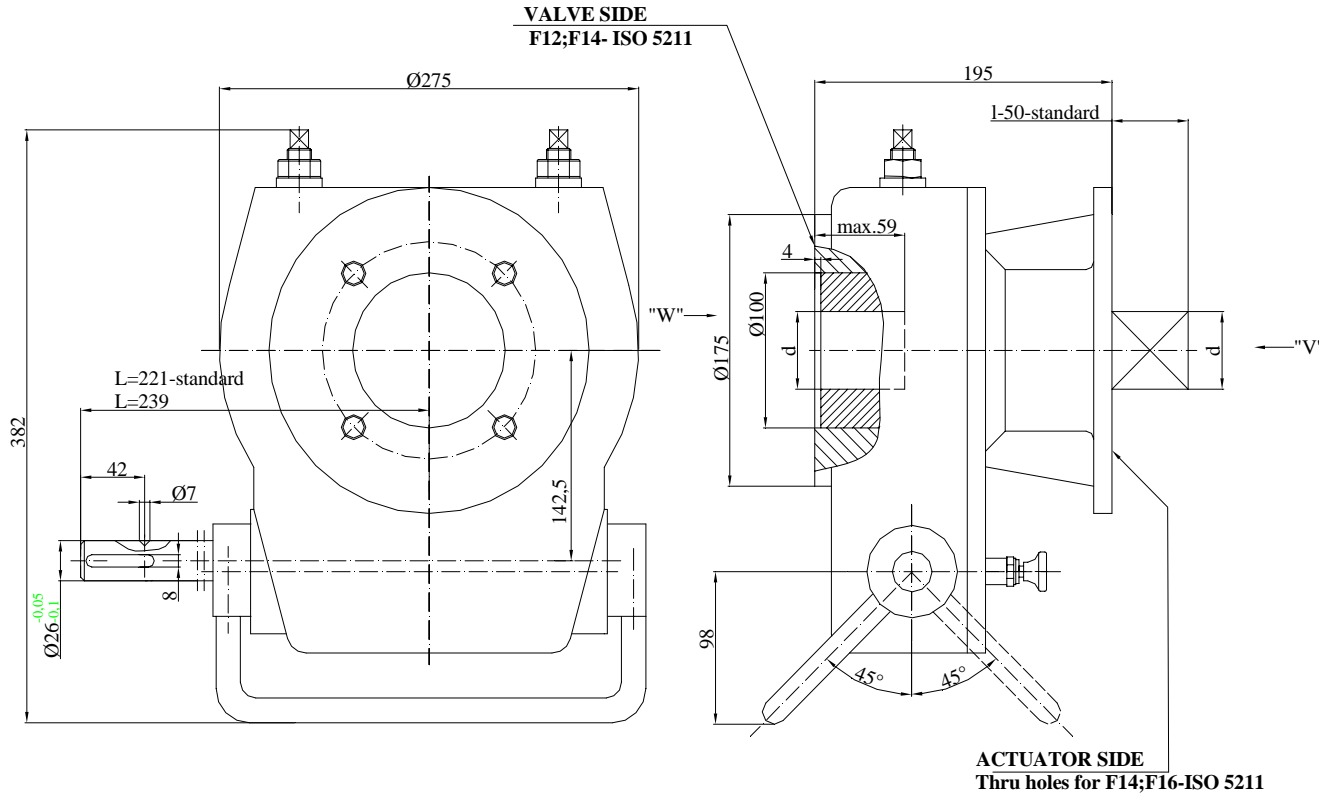
## ORDERING CODE:

<b>RMD-3A</b>	x	<b>F12</b>	-	<b>C36</b>	/	<b>F12</b>	-	<b>C36</b>	x	<b>45</b>	-	<b>180</b>
Type										L-Shaft length		
Valve side ISO 5211										l-length		
d-Valve coupling shape										d-Coupling shape & dim. -actuator side		
										Thru holes for actuator side ISO 5211		

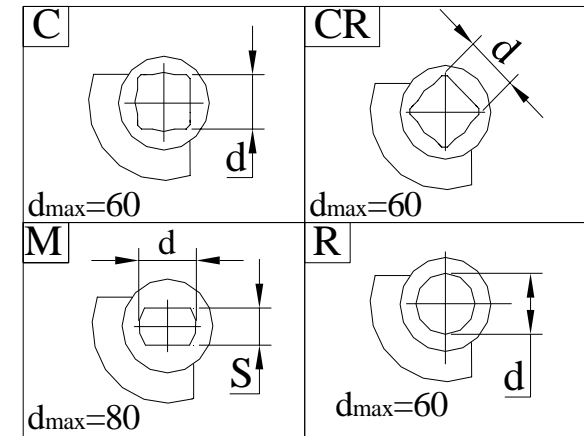
# DECLUTCHABLE "1/4-TURN" -ACTUATOR RMD 4A



Sheet nr.	618b
Date	05.03.2003



**View "V"; "W"**  
**Coupling shape Position "closed"**



Hand wheel - A600-standard  
Should be ordered separately

## TECHNICAL FEATURES:

- Output rated torque.....2500 Nm
- Input torque..... 190 Nm
- Ratio.....44
- Output angular stroke..... $90^{\circ} \pm 5^{\circ}$
- Hand wheel turns for a complete stroke.....11
- Capsulation.....IP 65
- Materials acc. to. Specification 128

## ORDERING CODE:

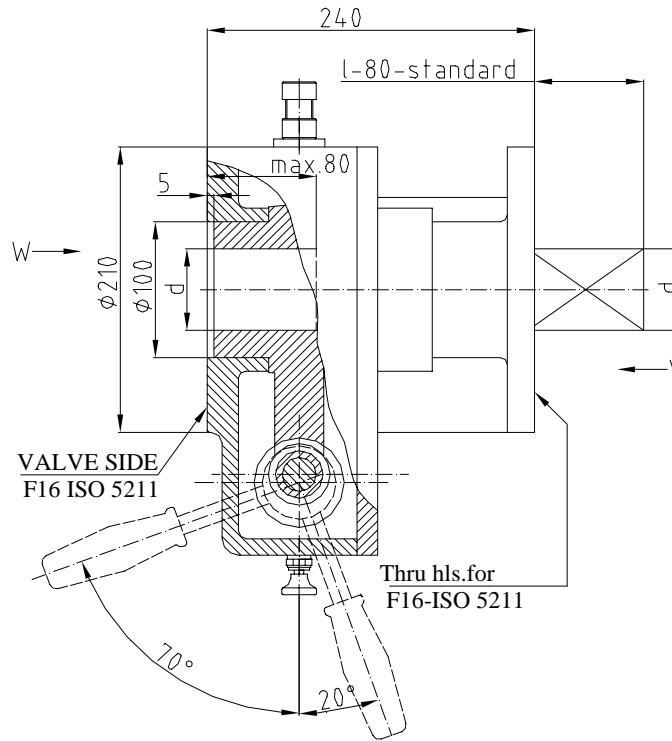
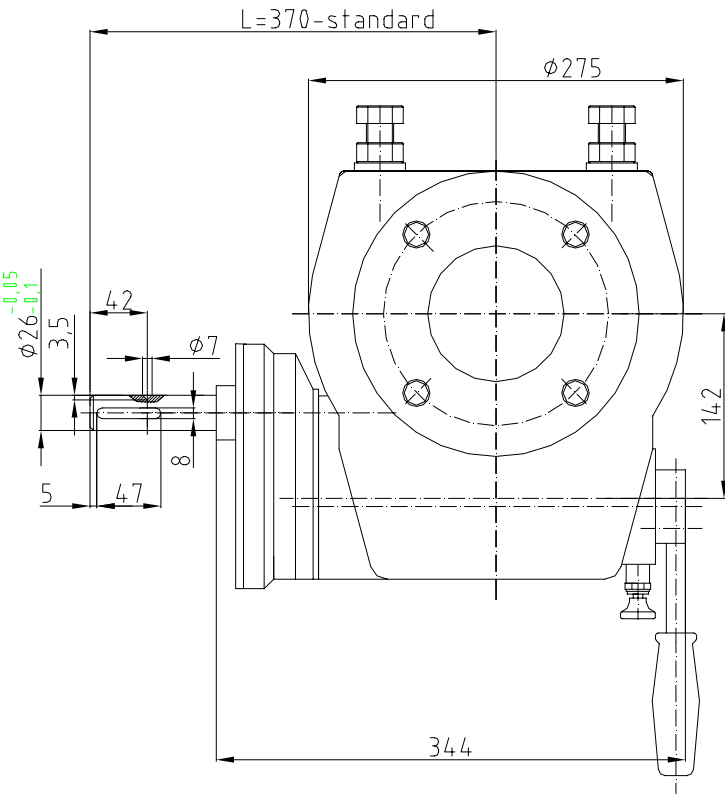
**RMD-4A** x **F14** - **C50** / **F14** - **C50** x **55** - **221**

Type				L-Shaft length
Valve side ISO 5211				l-length
d-Valve coupling shape				d-Coupling shape & dim. -actuator side
				Thru holes for actuator side ISO 5211

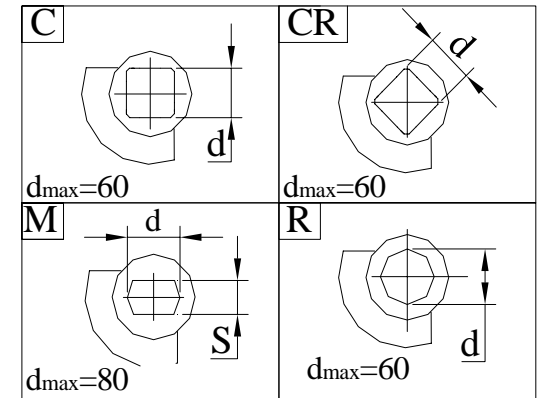
# DECLUTCHABLE "1/4-TURN" -ACTUATOR RMD 5



Sheet nr.	619b
Date	05.03.2003



View "V"; "W"  
Coupling shape Position "closed"



Handwheel - A600  
Should be ordered separately

## TECHNICAL FEATURES:

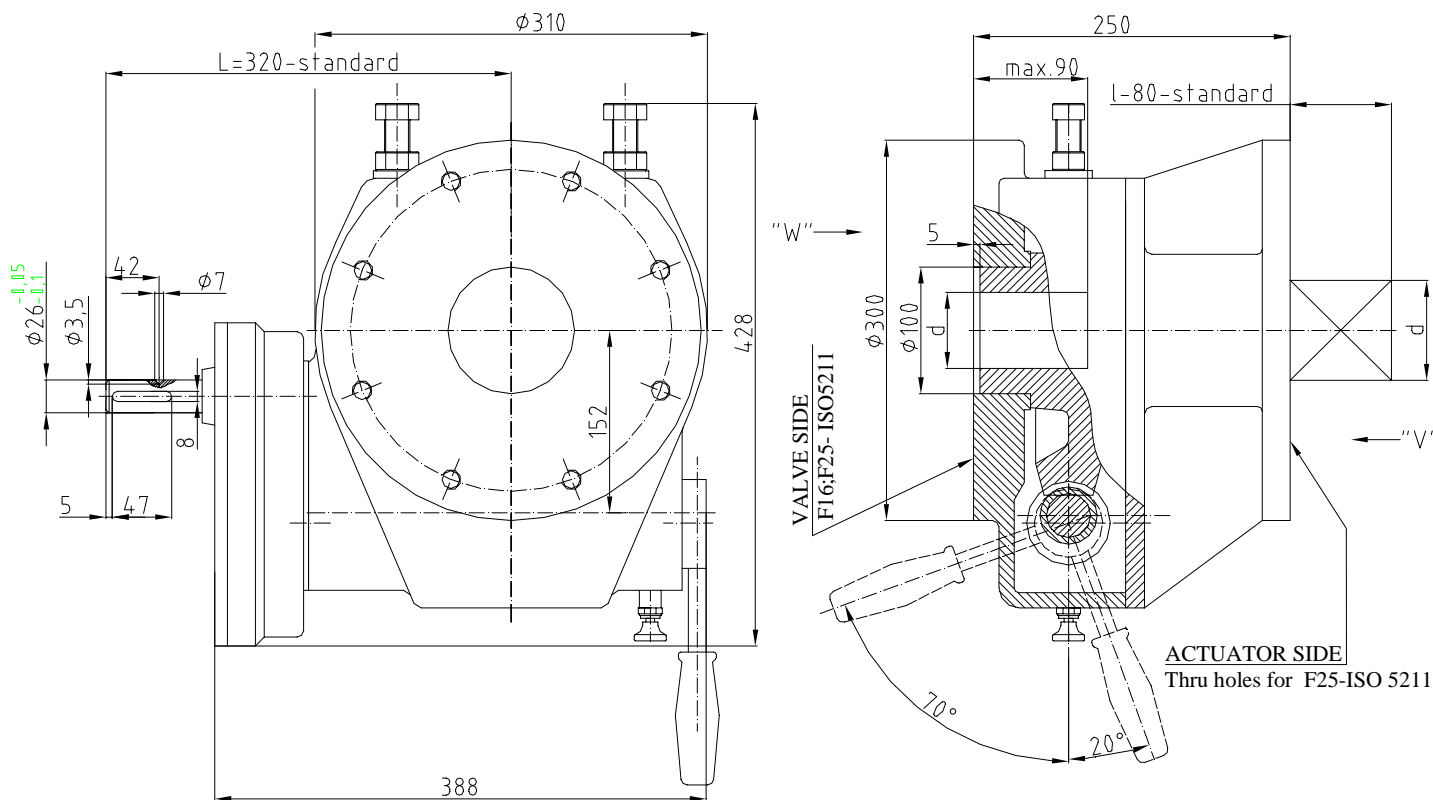
- Output rated torque.....4000 Nm
- Input torque..... 104 Nm
- Ratio.....127,9
- Output angular stroke..... $90^\circ \pm 5^\circ$
- Handwheel turns for a complete stroke....10.25
- Capsulation.....IP 65

## ORDERING CODE:

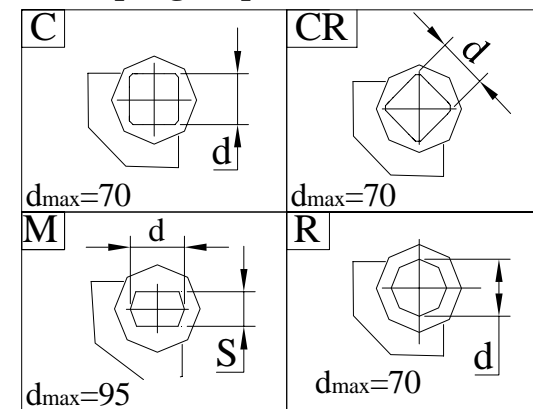
<b>RMD-5</b>	x	<b>F16</b>	-	<b>C60</b>	/	<b>F16</b>	-	<b>C60</b>	x	<b>80</b>	-	<b>370</b>
Type												L-Shaft length
Valve side ISO 5211												I-length
<b>d-Valve coupling shape</b>												<b>d-Coupling shape &amp; dim. -actuator side</b>
												Thru hls. for actuator side ISO 5211

# DECLUTCHABLE "1/4-TURN" -ACTUATOR RMD 6

Sheet nr.	620b
Date	05.03.2003



View "V";"W"  
Coupling shape Position "closed"



Handwheel - A600  
Should be ordered separately

## TECHNICAL FEATURES:

- Output rated torque.....8000 Nm
- Input torque..... 144 Nm
- Ratio.....216
- Output angular stroke.....90°±5°
- Handwheel turns for a complete stroke....10,25
- Capsulation.....IP 65

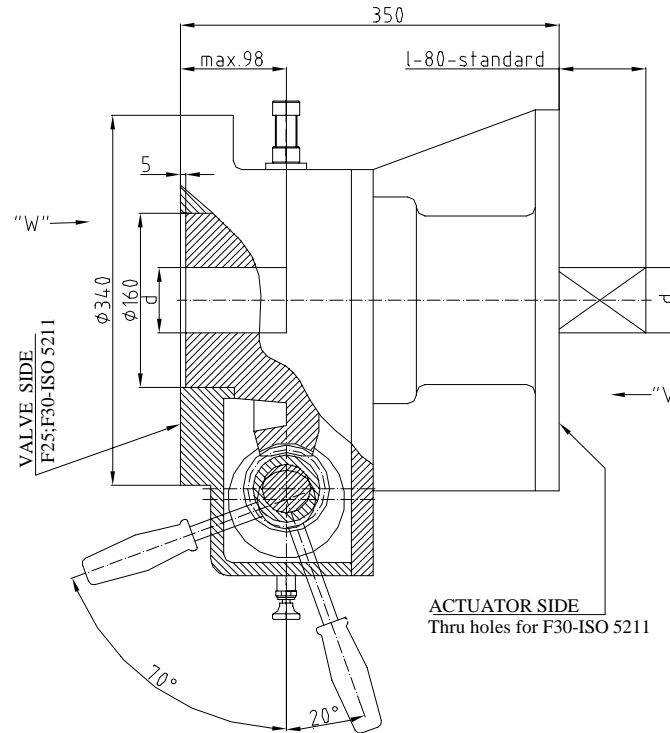
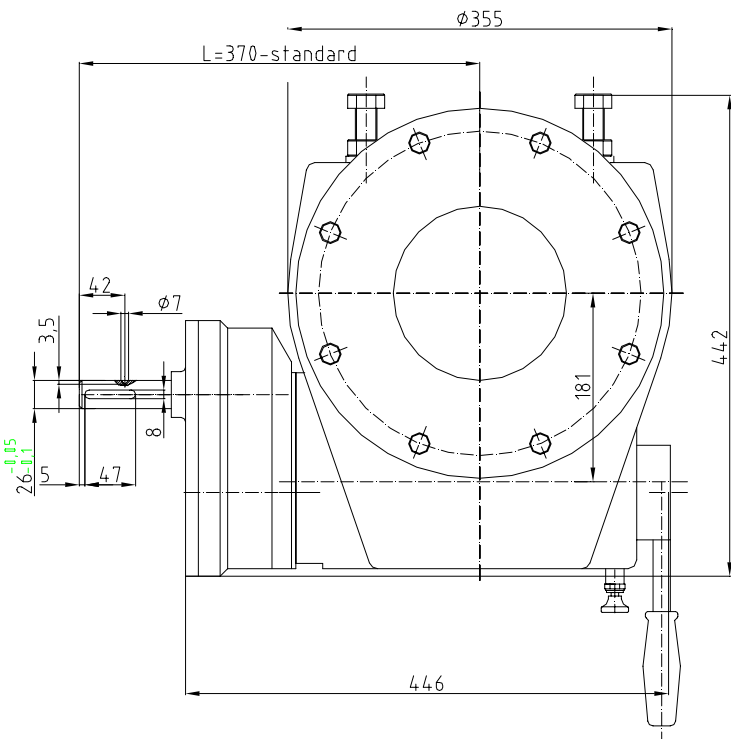
## ORDERING CODE:

<b>RMD-6</b>	x	<b>F25</b>	-	<b>C70</b>	/	<b>F25</b>	-	<b>C70</b>	x	<b>80</b>	-	<b>320</b>
Type												L-Shaft length
Valve side ISO 5211												l-length
d-Valve coupling shape												d-Coupling shape & dim. –actuator side
												Thru holes for actuator side ISO 5211

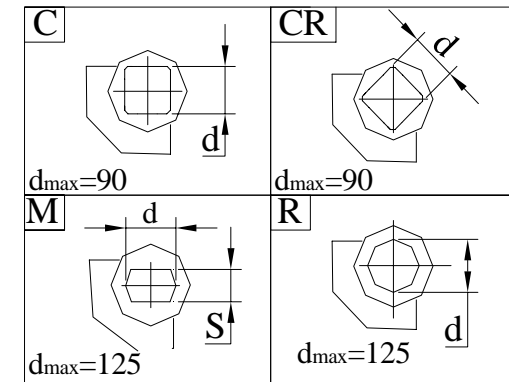
# DECLUTCHABLE "1/4-TURN" -ACTUATOR RMD 7



Sheet nr.	621b
Date	05.03.2003



View "V";"W"  
Coupling shape Position "closed"



Handwheel - A800  
*Should be ordered separately*

## TECHNICAL FEATURES:

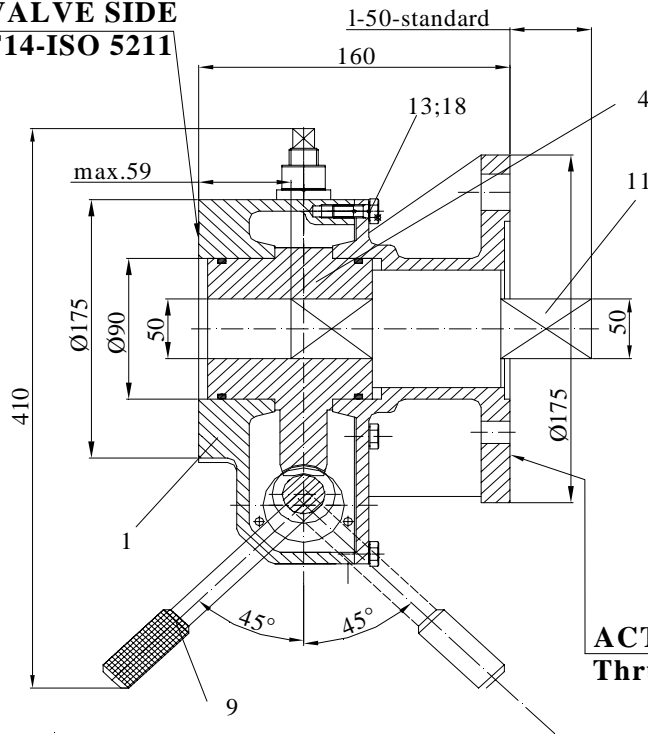
Output rated torque.....16000 Nm  
 Input torque.....163 Nm  
 Ratio.....379,5  
 Output angular stroke..... $90^{\circ} \pm 5^{\circ}$   
 Handwheel turns for a complete stroke....10,25  
 Capsulation.....IP 65

## ORDERING CODE:

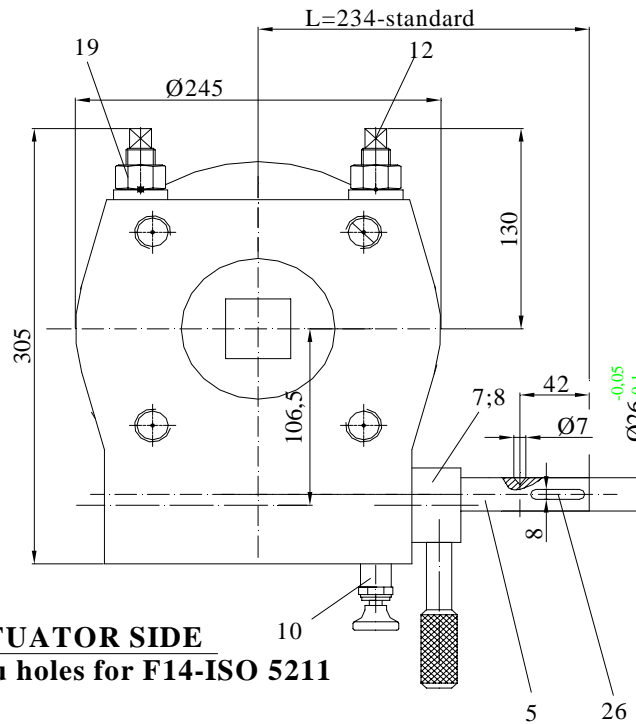
<b>RMD-7</b>	x	<b>F30</b>	-	<b>C70</b>	/	<b>F30</b>	-	<b>C70</b>	x	<b>80</b>	-	<b>370</b>
Type		Valve side ISO 5211		d-Valve coupling shape						L-Shaft length		I-length
d-Coupling shape & dim. -actuator side												
Thru holes for actuator side ISO 5211												

# DECLUTCHABLE "1/4-TURN" –ACTUATOR RMD 125M

**VALVE SIDE  
F14-ISO 5211**

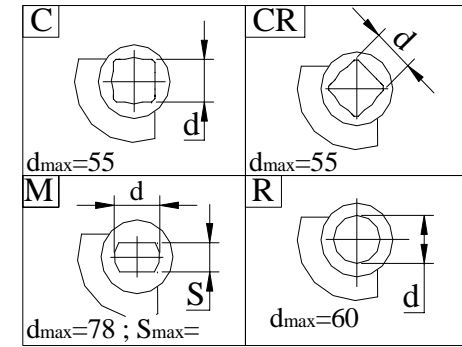


**ACTUATOR SIDE**  
Thru holes for F14-ISO 5211



Sheet nr.	466b
Date	01.09.2006

**View "V"; "W"**  
Coupling shape Position "closed"



Aluminum hand wheel –ø350-standard  
Should be ordered separately!

## TECHNICAL FEATURES:

Output rated torque.....	2500 Nm
Input torque.....	110 Nm
Ratio.....	76
Output angular stroke.....	90°±5°
Hand wheel turns for a complete stroke.....	19
Capsulation.....	IP67

## ORDERING CODE:

<b>RMD125M</b>	x	<b>F14</b>	-	<b>C50</b>	/	<b>F14</b>	-	<b>C50</b>	x	<b>55</b>	-	<b>234</b>
Type		Valve side ISO 5211		d-Valve coupling shape						L-Shaft length		I-length
						d-Coupling shape & dim. –actuator side						Thru holes for actuator side ISO 5211

Nr	Description	Material	Specification
1	Housings	Cast iron	GG-25-DIN 1691
4	Quadrant	Ductile Iron	GGG40-DIN1693
5	Input shaft	<b>Stainless Steel A4</b>	<b>X5CrNiMo17-12-2/AISI 316</b>
7	Sleeves	Bronze-CuSn 6	DIN 17662
8	Bushing	<b>Stainless Steel A4</b>	<b>X5CrNiMo17-12-2/AISI 316</b>
9	Lever	<b>Stainless Steel A4</b>	<b>X5CrNiMo17-12-2/AISI 316</b>
10	Locking screw	<b>Stainless Steel A4</b>	<b>X5CrNiMo17-12-2/AISI 316</b>
11	Driver	<b>Stainless Steel</b>	<b>X20Cr13-DIN 17440</b>
12	Set screws	<b>Stainless Steel A4</b>	<b>X5CrNiMo17-12-2/AISI 316</b>
13	Pin	<b>Stainless Steel A4</b>	<b>X5CrNiMo17-12-2/AISI 316</b>
18	Screw	<b>Stainless Steel A4</b>	<b>X5CrNiMo17-12-2/AISI 316</b>
19	Nut	<b>Stainless Steel A4</b>	<b>X5CrNiMo17-12-2/AISI 316</b>
21	Grease	Lithium-Calcium	UM170LiCaPb2
26	Parallel key	<b>Stainless Steel A4</b>	<b>X5CrNiMo17-12-2/AISI 316</b>
	Input bearings	-	51205-DIN 625
	"O" ring	Nitrile-DIN 3771	Nitrile-DIN 3771

