

UNIT

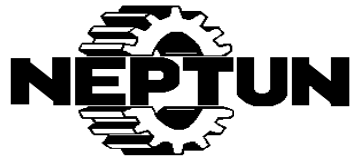
FOR OIL EXTRACTION USING PROGRESSIV CAVITY PUMPS

- DRIVE HEAD
- TORQUE ANCHOR
- CENTRALIZERS
- CONTROL PANEL

29 / 2005

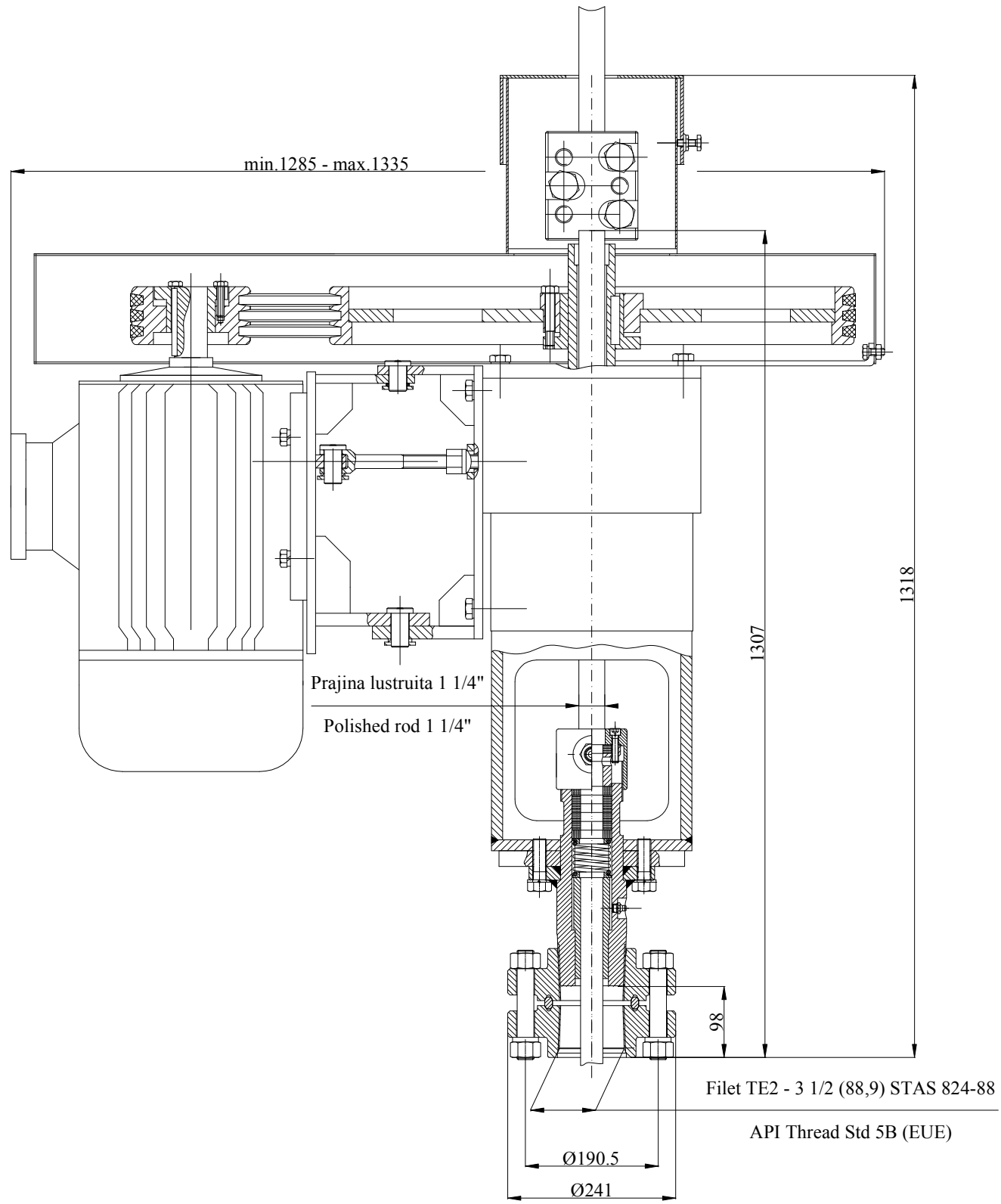
SC NEPTUN S.A.

Str. Bobalna; Nr. 57-63; 105600 Campina; Jud. Prahova; ROMANIA;
Tel.+40-244-335651; 335652; 336571; Fax.+40-244-370338; +40-244-336641; E-mail: office@neptun-gears.ro



UNITATE DE ANTRENARE
CU CURELE
DRIVE UNIT WITH BELTS

UAC-4



UAC-4

Nr No	Denumire Denomination	U.M.	Valori caracteristice Values				
1.	Putere motor Motor power	Kw	3 ; 4 ; 5,5 ; 7,5				
2.	Turatie motor Motor speed	rpm	720				
3.	Raport transmisia cu curele Transmission ratio		2,08	2,49	3,21	3,48	5
4.	Turatii la prajina lustruita Speed at the polish rod	rpm	341	285	221	204	142
5.	Moment maxim cuplaj unic sens Max.torque at the backstop coupling	Nm	3200				
6.	Sarcina maxima axiala Maximum axial load	tone	4				
7.	Capacitatea dinam. rulm. presiune Dyn.capacity of the thrust bearing	daN	24500				
8.	Durabilitate rulment la sarcina axiala Bearing durability under axial load	ore	min. 60000				
9.	Prajina lustruita Polish rod	inch	1 1/4				
10.	Filet fixare in cap pompare Pumping head thread	inch	3 1/2				
11.	Flansa fixare in cap pompare Flange for pumping head API 6B	inch	3 1/8-2000PSI				

SIMBOLIZARE / ORDERING CODE:

U A C - 4 - P/n - n

Unitate antrenare cu curele
Drive unit with belts

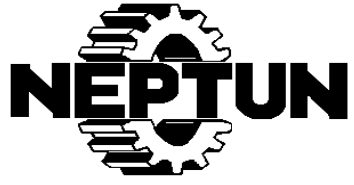
Sarcina axiala max. [to]
Maximum axial load [to]

Turatie prajina lustruita [rpm]
Polish rod speed [min⁻¹]

Putere motor [Kw]/Turatie[rpm]
Motor power [Kw]/Speed [min⁻¹]

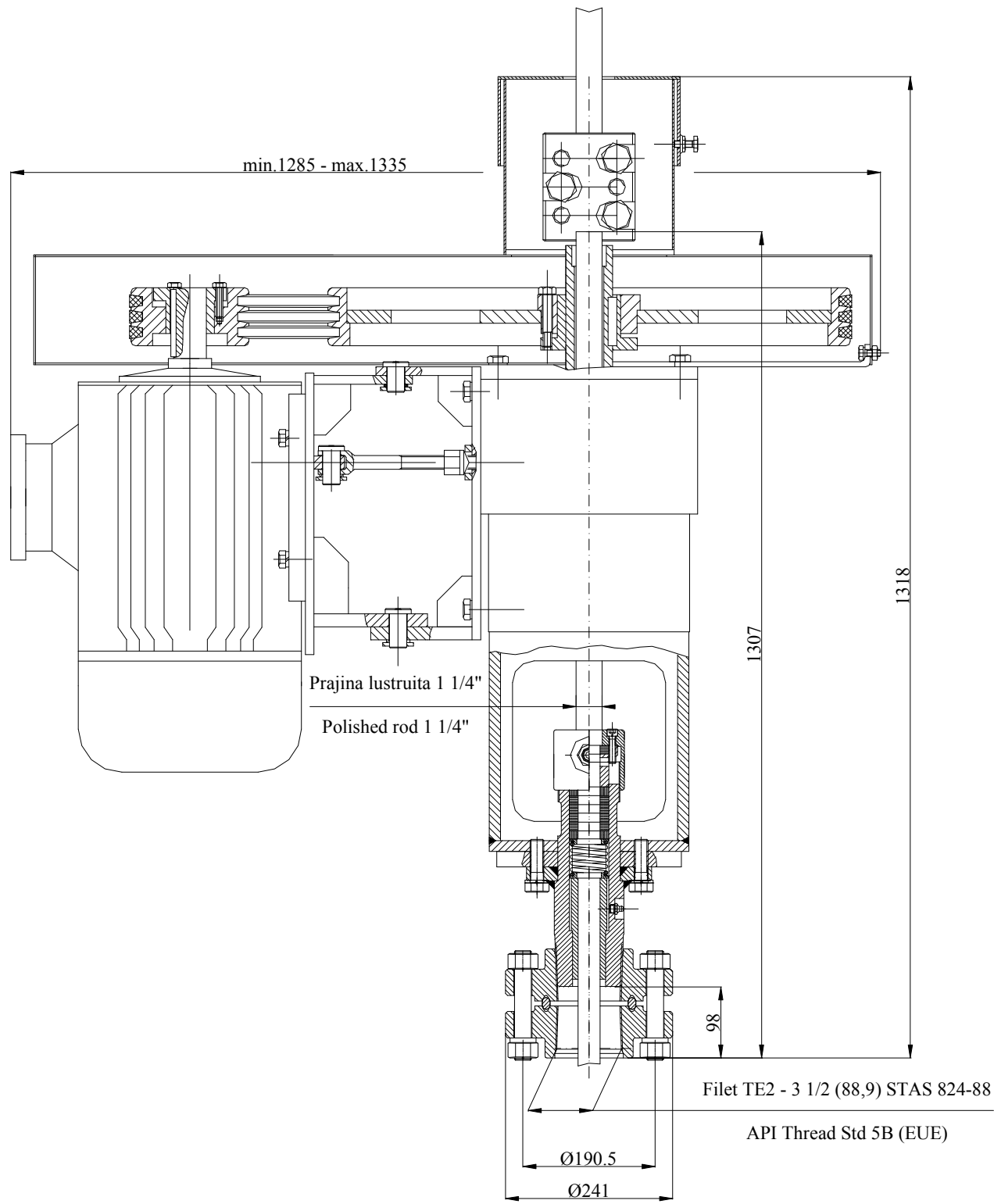
SC NEPTUN S.A.

Str. Bobalna; Nr. 57-63; 105600 Campina; Jud. Prahova; ROMANIA;
Tel.+40-244-335651; 335652; 336571; Fax.+40-244-370338; +40-244-336641; E-mail: office@neptun-gears.ro



UNITATE DE ANTRENARE
CU CURELE
DRIVE UNIT WITH BELTS

UAC-6



UAC-6

Nr No	Denumire Denomination	U.M.	Valori caracteristice Values				
1.	Putere motor Motor power	Kw	7,5; 11; 15				
2.	Turatie motor Motor speed	rpm	720				
3.	Raport transmitere Transmission ratio		2,27	3,12	3,75	5	6
4.	Turatii la prajina lustruita Speed at the polish rod	rpm	330	240	200	150	125
5.	Moment maxim cuplaj unic sens Max.torque at the backstop coupling	Nm	3200				
6.	Sarcina maxima axiala Maximum axial load	tone	6				
7.	Capacitatea dinam. rulm. presiune Dyn.capacity of the thrust bearing	daN	40800				
8.	Durabilitate rulment la sarcina axiala Bearing durability under axial load	ore	min. 60000				
9.	Prajina lustruita Polish rod	inch	1 1/4				
10.	Filet fixare in cap pompare Pumping head thread	inch	3 1/2				
11.	Flansa fixare in cap pompare Flange for pumping head API 6B	inch	3 1/8-2000PSI				

SIMBOLIZARE / ORDERING CODE:

U A C - 6 - P/n - n

Unitate antrenare cu curele
Drive unit with belts

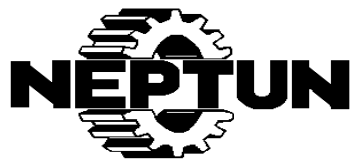
Sarcina axiala max. [to]
Maximum axial load [to]

Turatie prajina lustruita [rpm]
Polish rod speed [min⁻¹]

Putere motor [Kw]/Turatie[rpm]
Motor power [Kw]/Speed [min⁻¹]

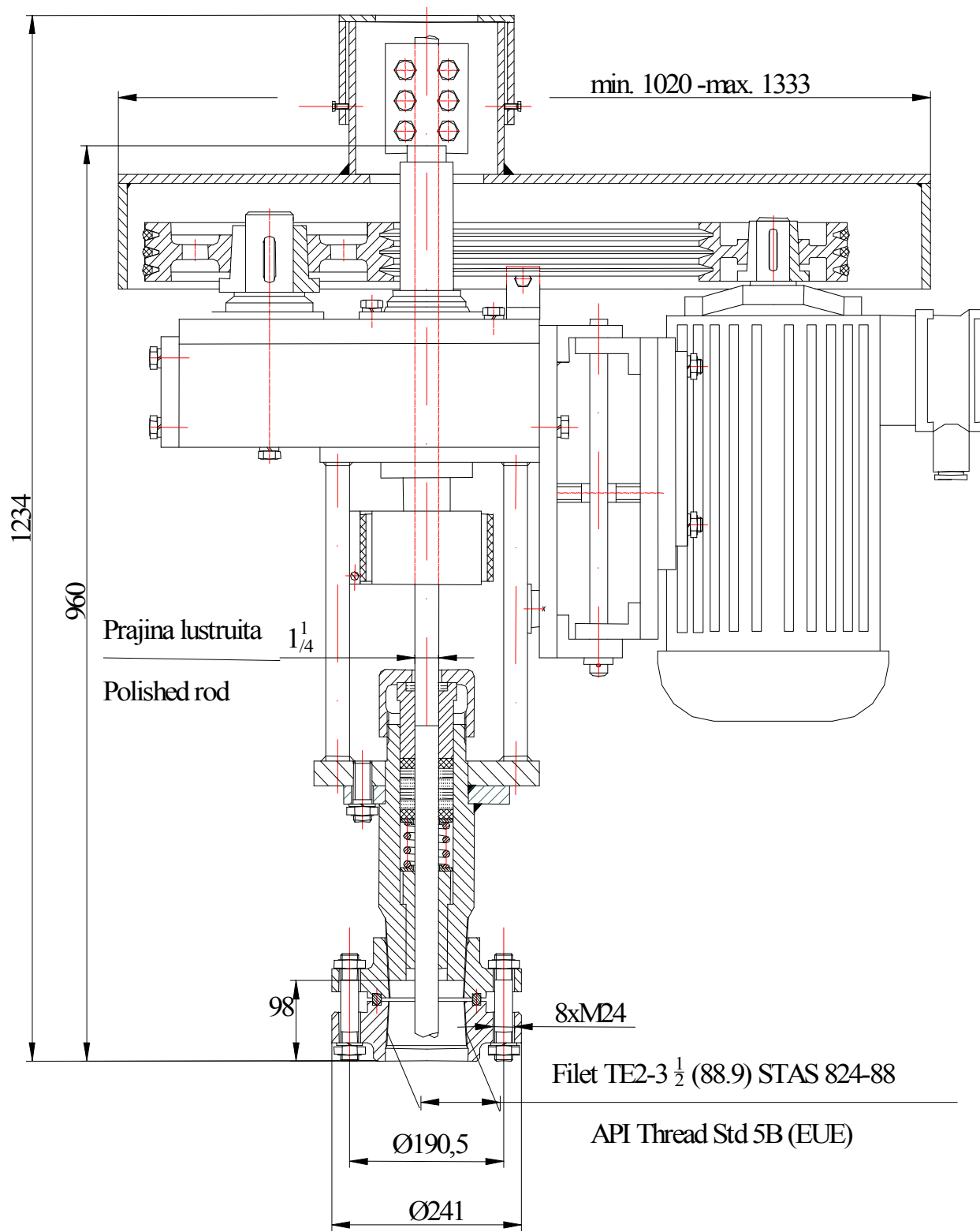
SC NEPTUN S.A.

Str. Bobalna; Nr. 57-63; 105600 Campina; Jud. Prahova; ROMANIA;
Tel.+40-244-335651; 335652; 336571; Fax.+40-244-370338; +40-244-336641; E-mail: office@neptun-gears.ro



**UNITATE DE ANTRENARE CU
REDUCTOR SI CURELE**
**DRIVE UNIT WITH GEAR AND
BELTS**

UARC-4



UARC-4

Nr No	Denumire Denomination	U.M.	Valori caracteristice Values											
1.	Putere motor Motor power	Kw	2,2; 3; 4; 5,5; 7,5; 11											
2.	Turatie motor Motor speed	rpm	720				970				1460			
3.	Raport transmisia cu curele Transmission ratio of the belts		2.69	2.00	1.44	1.13	2.69	2.00	1.44	1.13	2.69	2.00	1.44	1.13
4.	Turatii la prajina lustruita Speed at the polish rod	rpm	54	72	100	127	74	100	139	177	111	150	208	266
5.	Raport transmitere reductor Gearbox transmission ratio	-	5											
6.	Moment maxim cuplaj unic sens Max.torque at the backstop coupling	Nm	3200											
7.	Sarcina axiala maxima Maximum axial load	tone	4											
8.	Capacitatea dinam. rulm. de presiune Dyn.capacity of the thrust bearing	daN	40800											
9.	Durabilitate rulment la sarcina axiala Bearing durability under axial load	ore	min. 60000											
10.	Prajina lustruita Polish rod	inch	1 1/4											
11.	Filet fixare in cap pompare Pumping head thread	inch	3 1/2 EU											
12.	Flansa fixare in cap pompare Flange for pumping head API 6B	inch	3 1/8-2000PSI											

SIMBOLIZARE/ORDERING CODE:

U A R C - 4 - P/n - n

Unitate antrenare cu reductor si curele
Drive unit with gear and belts

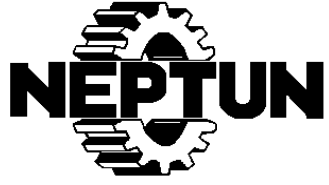
Sarcina axiala max. [to]
Maximum axial load [to]

Turatie prajina lustruita [rpm]
Polish rod speed [min⁻¹]

Putere motor [Kw]/Turatie[rpm]
Motor power [Kw]/Speed [min⁻¹]

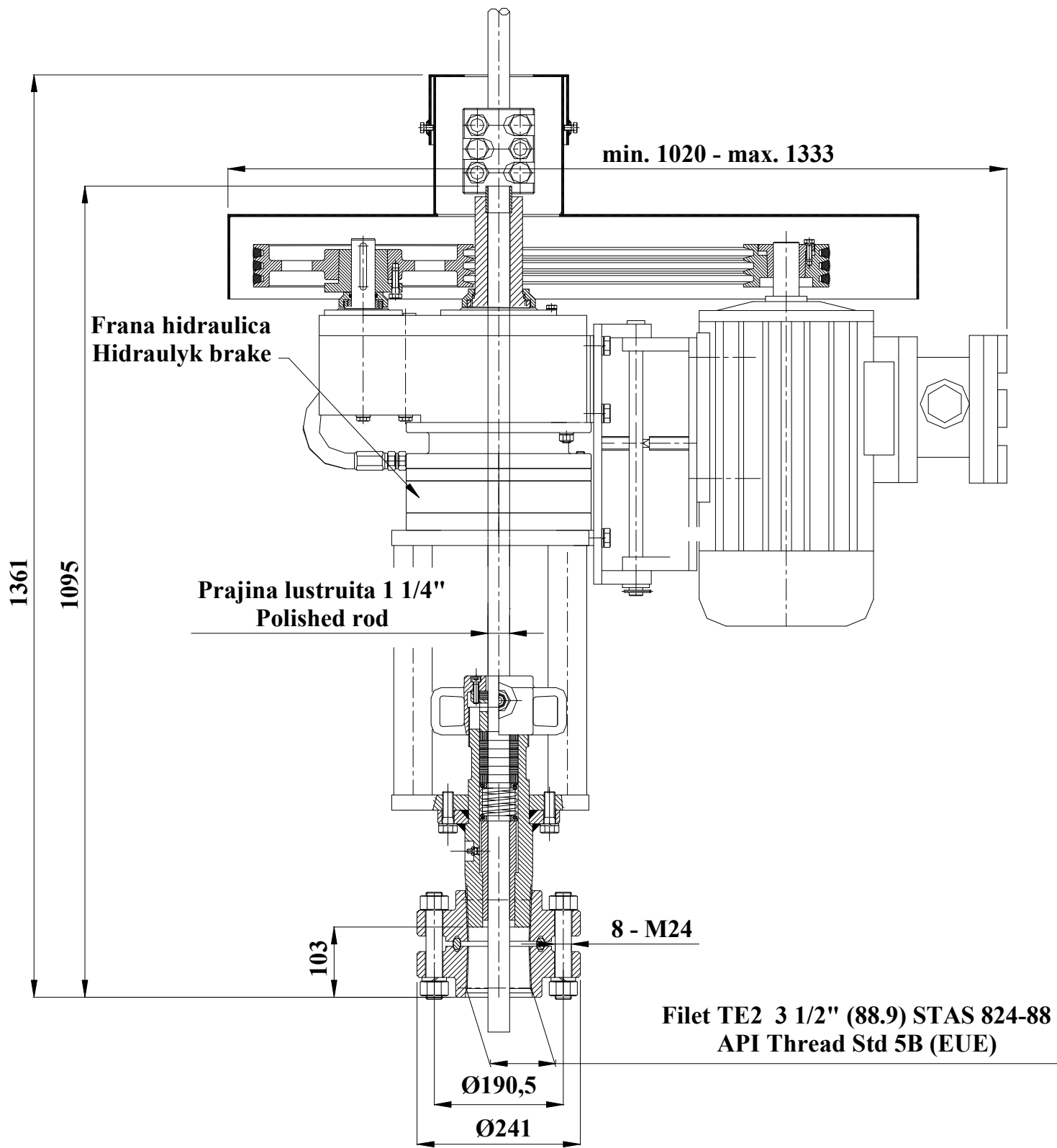
SC NEPTUN S.A.

Str. Bobalna; Nr. 57-63; 105600 Campina; Jud. Prahova; ROMANIA;
Tel.+40-244-335651; 335652; 336571; Fax.+40-244-370338; +40-244-336641; E-mail: office@neptun-gears.ro



**UNITATE DE ANTRENARE CU REDUCTOR
SI CURELE SI FRANA HIDRAULICA
DRIVE UNIT WITH GEAR AND BELTS AND
HYDRAULIK BRAKE**

UARC-4-FH



UARC-4-FH

Nr No	Denumire Denomination	U.M.	Valori caracteristice Values											
1.	Putere motor Motor power	Kw	2,2; 3; 4; 5,5; 7,5; 11											
2.	Turatie motor Motor speed	rpm	720				970				1460			
3.	Raport transmisia cu curele Transmission ratio of the belts		2.69	2.00	1.44	1.13	2.69	2.00	1.44	1.13	2.69	2.00	1.44	1.13
4.	Turatii la prajina lustruita Speed at the polish rod	rpm	54	72	100	127	74	100	139	177	111	150	208	266
5.	Raport transmitere reductor Gearbox transmission ratio	-	5											
6.	Moment maxim franat Braking max.torque	Nm	250											
7.	Sarcina axiala maxima Maximum axial load	tone	4											
8.	Capacitatea dinam. rulm. de presiune Dyn.capacity of the thrust bearing	daN	40800											
9.	Durabilitate rulment la sarcina axiala Bearing durability under axial load	ore	min. 60000											
10.	Prajina lustruita Polish rod	inch	1 1/4											
11.	Filet fixare in cap pompare Pumping head thread	inch	3 1/2 EU											
12.	Flansa fixare in cap pompare Flange for pumping head API 6B	inch	3 1/8-2000PSI											

SIMBOLIZARE/ORDERING CODE:

UARC - 4FH - P/n - n

Unitate antrenare cu reductor si
curele
Drive unit with gear and belts

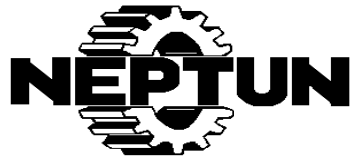
Sarcina axiala medie [to]
Average axial load [to]

Turatie prajina lustruita [rpm]
Polish rod speed [min⁻¹]

Putere motor [Kw]/Turatie[rpm]
Motor power [Kw]/Speed [min⁻¹]

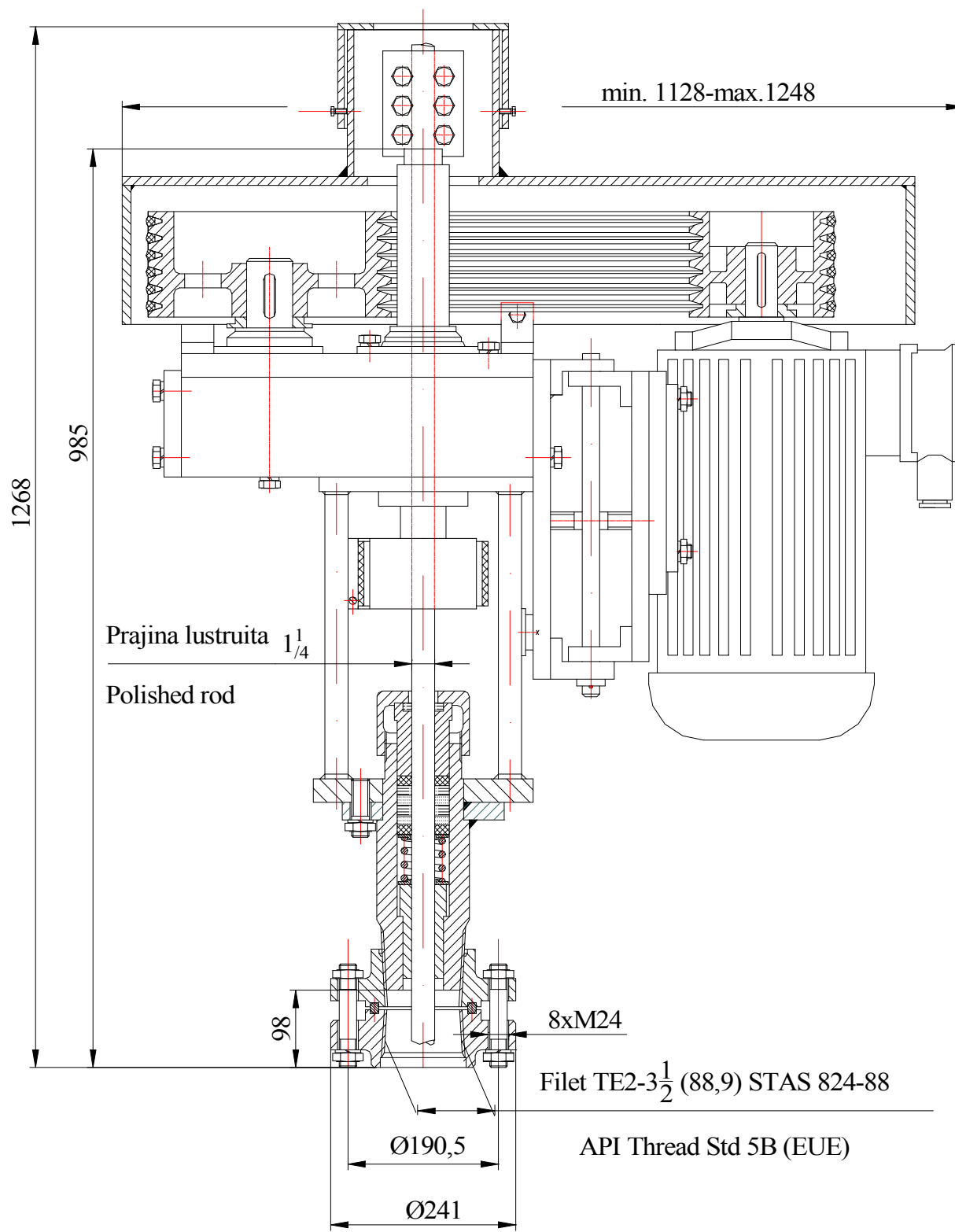
SC NEPTUN S.A.

Str. Bobalna; Nr. 57-63; 105600 Campina; Jud. Prahova; ROMANIA;
Tel.+40-244-335651; 335652; 336571; Fax.+40-244-370338; +40-244-336641; E-mail: office@neptun-gears.ro



**UNITATE DE ANTRENARE CU
REDUCTOR SI CURELE
DRIVE UNIT WITH GEAR AND
BELTS**

UARC-6



UARC-6

Nr No	Denumire Denomination	U.M.	Valori caracteristice Values											
1.	Putere motor Motor power	Kw	7,5; 11; 15; 18,5; 22											
2.	Turatie motor Motor speed	rpm	720				970				1460			
3.	Raport de transmisie curele Belt transmission ratio of the belts		2,5	1,9	1,43	1,04	2,5	1,9	1,43	1,04	2,5	1,9	1,43	1,04
4.	Turatii la prajina lustruita Speed at the polish rod	rpm	54	67	80	103	77	102	136	186	116	152	203	279
5.	Raport transmitere reductor Gearbox transmission ratio		5											
6.	Moment maxim cuplaj unic sens Max.torque at the backstop coupling	Nm	3200											
7.	Sarcina axiala maxima Maximum axial load	tone	6											
8.	Capacitatea dinam. rulm. presiune Dyn.capacity of the thrust bearing	daN	40800											
9.	Durabilitate rulment la sarcina axiala Bearing durability under axial load	ore	min. 60000											
10.	Prajina lustruita Polish rod	inch	1 1/4											
11.	Filet fixare in cap pompare Pumping head thread	inch	3 1/2											
12.	Flansa fixare in cap pompare Flange for pumping head API 6B	inch	3 1/8-2000PSI											

SIMBOLIZARE/ORDERING CODE:

U A R C - 6 - P/n - n

Unitate antrenare cu reductor si curele
Drive unit with gear and belts

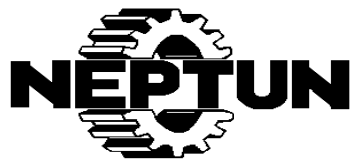
Sarcina axiala max. [to]
Maximum axial load [to]

Turatie prajina lustruita [rpm]
Polish rod speed [min⁻¹]

Putere motor [Kw]/Turatie[rpm]
Motor power [Kw]/Speed [min⁻¹]

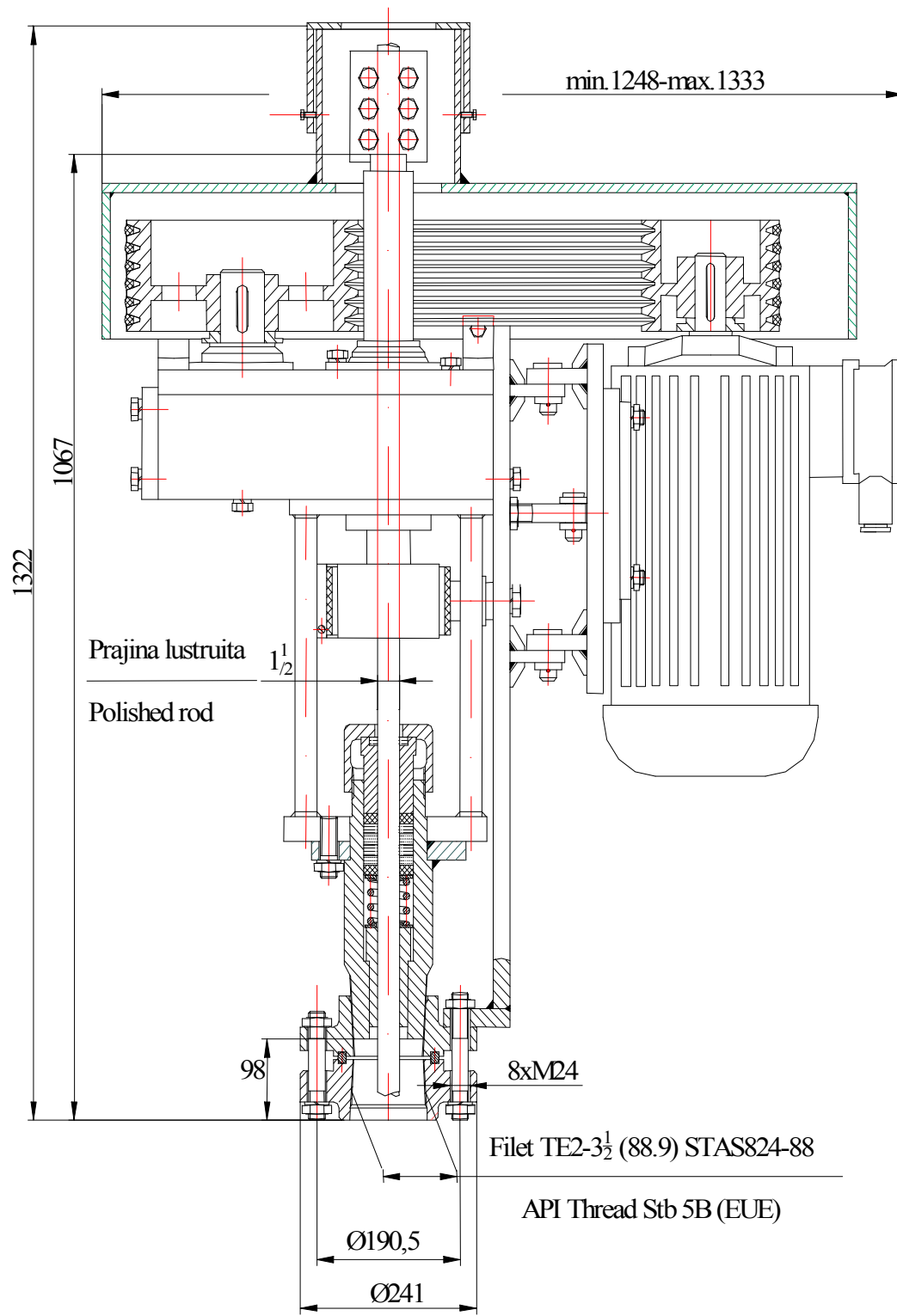
SC NEPTUN S.A.

Str. Bobalna; Nr. 57-63; 105600 Campina; Jud. Prahova; ROMANIA;
Tel.+40-244-335651; 335652; 336571; Fax.+40-244-370338; +40-244-336641; E-mail: office@neptun-gears.ro



**UNITATE DE ANTRENARE CU
REDUCTOR SI CURELE**
**DRIVE UNIT WITH GEAR AND
BELTS**

UARC-9



UARC-9

Nr No	Denumire Denomination	U.M.	Valori caracteristice Values
1.	Putere motor Motor power	Kw	7,5 ;15; 22 ;30 ; 37 ; 45
2.	Turatie motor Motor speed	rpm	720 970 1460
3.	Raport de transmisie curele Belt transmittion ratio of rthe belts		2,62 1,96 1,48 1,17 2,62 1,96 1,48 1,17 2,62 1,96 1,48 1,17
4.	Turatii la prajina lustruita Speed at the polish rod	rpm	55 74 97 124 74 99 131 166 123 154 200 252
5.	Raport transmitere reductor Gearbox transmittion ratio		5
6.	Moment maxim cuplaj unic sens Max.torque at the backstop coupling	Nm	3850
7.	Sarcina axiala maxima Maximum axial load	tone	9
8.	Capacitatea dinam. rulm. De presiune Dyn.capacity of the thrust bearing	daN	86300
9.	Durabilitate rulment la sarcina axiala Bearing durability under axial load	ore	min. 60000
10.	Prajina lustruita Polish rod	inch	1 1/2
11.	Filet fixare in cap pompare Pumping head thread	inch	3 1/2
12.	Flansa fixare in cap pompare Flange for pumping head API 6B	inch	3 1/8-2000PSI

SIMBOLIZARE/ORDERING CODE:

U A R C - 9 - P/n - n

Unitate antrenare cu reductor si curele
Drive unit with gear and belts

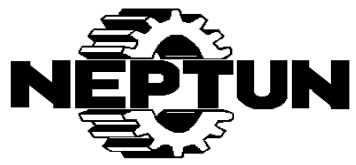
Sarcina axiala max. [to]
Maximum axial load [to]

Turatie prajina lustruita [rpm]
Polish rod speed [min⁻¹]

Putere motor [Kw]/Turatie[rpm]
Motor power [Kw]/Speed [min⁻¹]

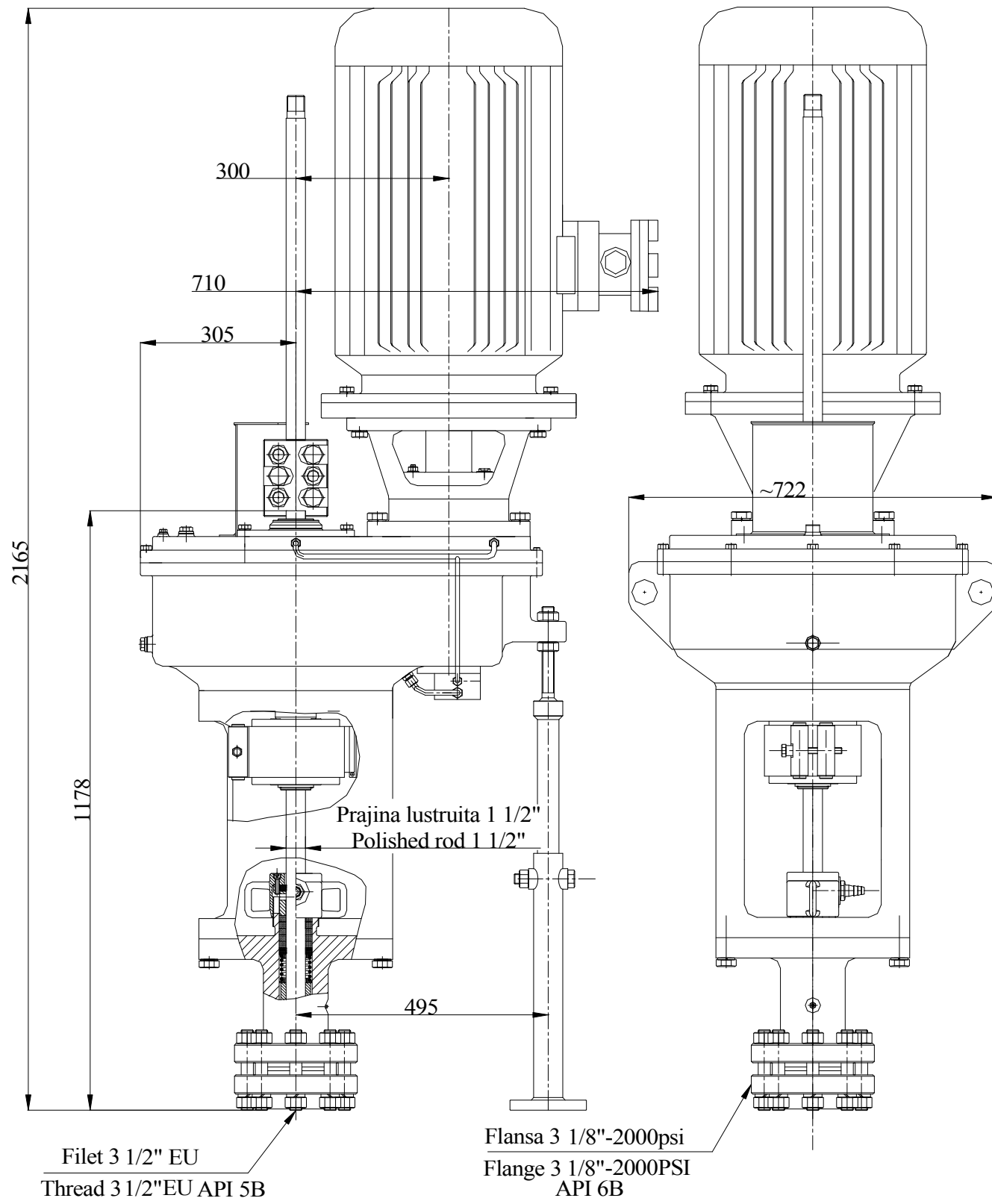
SC NEPTUN S.A.

Str. Bobalna; Nr. 57-63; 105600 Campina; Jud. Prahova; ROMANIA;
Tel.+40-244-335651; 335652; 336571; Fax.+40-244-370338; +40-244-336641; E-mail: office@neptun-gears.ro



UNITATE DE ANTRENARE CU
REDUCTOR
DRIVE UNIT WITH GEAR

UAR-16



UAR-16

Nr No	Denumire Denomination	U.M.	Valori caracteristice Values		
1.	Putere motor Motor power	Kw	37;45	37;45;55	37;45;55
			HP	45;60	45;60;75
2.	Turatie motor Motor speed	rpm	720	970	1460
			860	1160	1750
3.	Raport transmitere reductor Gearbox transmission ratio	-	6,1:1 7,1:1 8,1:1		
4.	Turatii la prajina lustruita Speed at the polish rod	rpm	118	159	240
			101	137	206
			89	120	180
			141	190	287
			121	163	246
			106	143	216
5.	Moment maxim cuplaj unic sens Max.torque at the backstop coupling	Nm	3850		
6.	Sarcina axiala maxima la 300rpm Maximum axial load @ 300RPM	tone	16		
7.	Capacitatea dinam. rulm. de presiune Dyn.capacity of the thrust bearing	daN	138000		
8.	Durabilitate rulment la sarcina axiala Bearing durability under axial load	ore	min. 76000 (8,6 ani)		
9.	Prajina lustruita Polish rod	inch	1 1/2		
10.	Filet fixare in cap pompare Pumping head thread	inch	3 1/2 EU		
11.	Flansa fixare in cap pompare Flange for pumping head API 6B	inch	3 1/8-2000PSI		

SIMBOLIZARE / ORDERING CODE:

U A R - 16 - P/n - n

Unitate antrenare cu reductor si curele
Drive unit with gear and belts

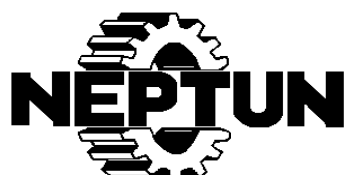
Turatie prajina lustruita [rpm]
Polish rod speed [min⁻¹]

Sarcina axiala maxima [to]
Average axial load [to]

Putere motor [Kw sau HP]/Turatie[rpm]
Motor power [Kw or HP]/Speed [RPM]

SC NEPTUN S.A.

Str. Bobalna; Nr. 57-63; 105600 Campina; Jud. Prahova; ROMANIA;
Tel.+40-244-335651; 335652; 336571; Fax.+40-244-370338; +40-244-336641;
E-mail: office@neptun-gears.ro

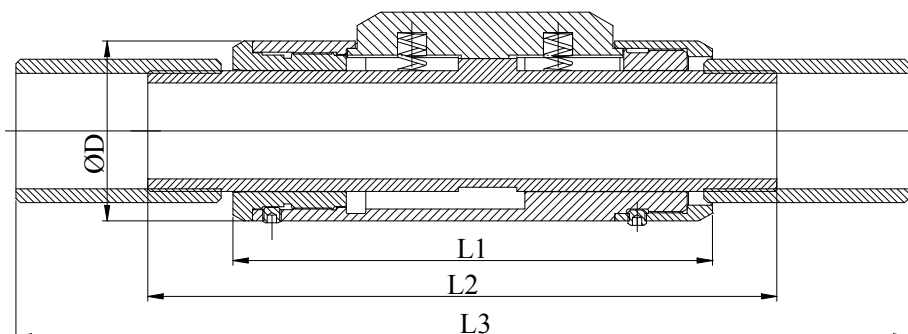


ANCORE DE TORSIUNE TORQUE ANCHOR

AT

Ancora de torsiune se utilizeaza pentru preluarea momentului reactiv dat de frecarea intre rotorul si statorul pompei elicoidale cu cavitati progresive si previne desurubarea tubingului. Se monteaza sub pompa elicoidala.

Torque anchor is used to take the reactive torque given by the friction between the rotor and the stator of the helicoidal pump with progressive cavities, to prevent the tubing from unscrewing. It is mounted under the pump.



Cod Code	Diam.fixare Fasten dia. [mm]	Dimensiuni/Dimensions [mm]				Conexiune Connection [inch]
		D	L ₁	L ₂	L ₃	
AT 5 1/2	119 - 139	116.8	312	409	566	2 7/8 EU
AT 5 3/4						
AT 6 5/8 I						
AT 6 5/8 II						
AT 7	152 - 172	116.8	312	409	566	3 1/2 EU
		142	142	422	590	
AT 8 5/8	192 - 212	142	142	402	566	2 7/8 EU
					590	3 1/2 EU
AT 9 5/8 I	215 - 235				590	3 1/2 EU
AT 9 5/8 II	220 - 240				590	3 1/2 EU

Este construita pe principiul unei mandrine cu trei came care imping bacurile montate intr-o carcasa.

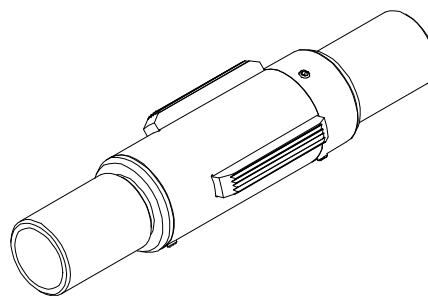
Bacurile sunt impinse si tinute in contact permanent cu burlanul de tubare al sondei de arcuri elicoidale. Titeiul pompat trece prin arborele tubular central pe care sunt montate camele.

Sensul de armare este dreapta (orar) privind dinspre pompa, bacurile ancorei se infig in burlanul de tubare al sondei la aparitia momentului reactiv. Dezarmarea se face rotind tubingul in sens stanga (antiorar) de la suprafata.

It uses the principle of a mandrel with three cams pushing out the anchoring blades, mounted in a case.

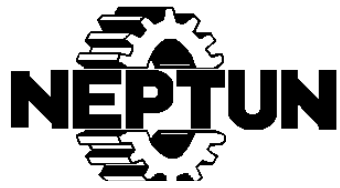
The blades are permanently pushed and kept in touch with the well casing wall by means of helicoidal springs. The oil pumped is passing through the central hollow shaft onto which the cams are mounted.

When the tubing rotates clockwise, the anchoring blades bite into the casing wall whenever a reactive torque is developed. Disengaging is done rotating the tubing counter-clockwise from the surface.



SC NEPTUN S.A.

Str. Bobalna; Nr. 57-63; 105600 Campina; Jud. Prahova; ROMANIA;
Tel.+40-244-335651; 335652; 336571; Fax.+40-244-370338; +40-244-336641; E-mail: office@neptun-gears.ro

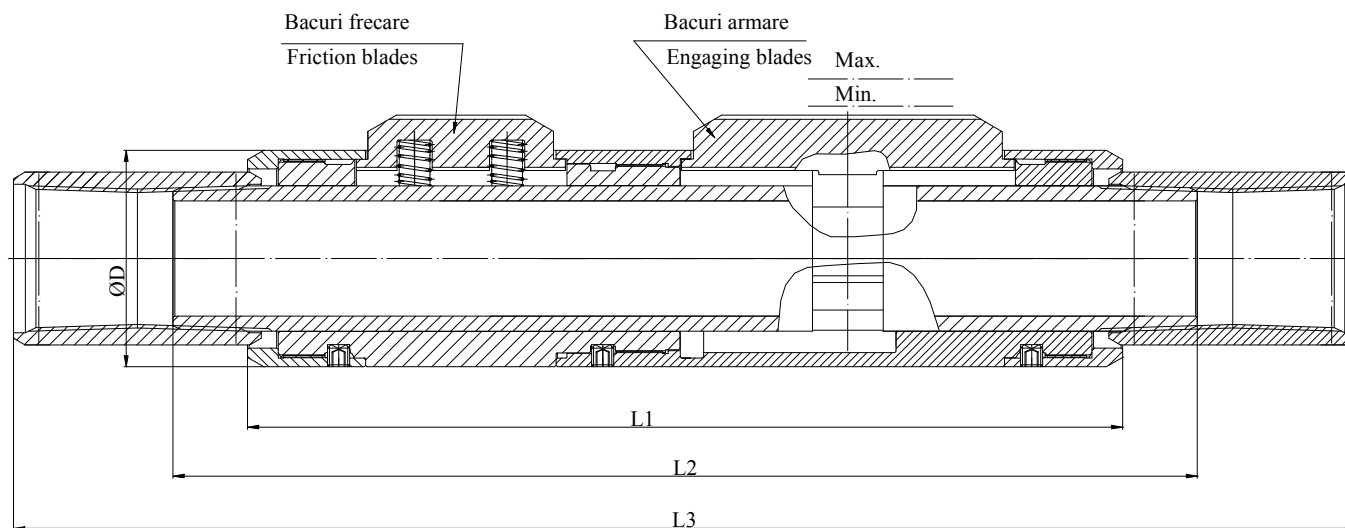


ANCORE DE TORSIUNE DUBLE DOUBLE TORQUE ANCHOR

ATD

Ancora de torsiune se utilizeaza pentru preluarea momentului reactiv dat de frecarea intre rotorul si statorul pompei elicoidale cu cavitati progresive si previne desurubarea tubingului. Se monteaza sub pompa elicoidala.

Torque anchor is used to take the reactive torque given by the friction between the rotor and the stator of the helicoidal pump with progressive cavities, to prevent the tubing from unscrewing. It is mounted under the pump.



Cod Code	Diam.fixare Fasten dia. [mm]	Dimensiuni/Dimensions[mm]				Conexiune Connection [inch]
		ØD	L ₁	L ₂	L ₃	
ATD 5 1/2	116 - 130	110.5	452	553	724.5	2 7/8 EU
ATD 5 3/4	120 - 135	110.5	452	553	724.5	
ATD 6 ⁵ / ₈	135 - 155	116.8	471	550	723	

Este construita pe principiul unei mandrine cu trei came care imping bacurile montate intr-o carcasa. Bacurile de frezare sunt impinse si tinute in contact permanent cu burlanul de tubare al sondei de arcuri elicoidale. La aparitia momentului reactiv, carcasa cu bacurile de armare raman pe loc, mandrina se roteste si impinge bacurile de armare spre exterior care se infig in burlanul de tubare al sondei. Sensul de armare este dreapta (orar) privind dinspre pompa. Dezarmarea se face rotind tubingul in sens stanga (antiorar) de la suprafata. Titeiul pompat trece prin arborele tubular central (spre aspiratia pompei).

It is designed on the principle of a mandrel with 3 cams pushing onto the blades mounted inside a case. The friction blades are pushed and kept in permanent touch with the well casing by means of helicoidal springs. Whenever reactive torque is developed, the case is locked, so the mandrel rotates, pushing the blades, which bite into the casing wall. The engaging hand of rotation is clockwise, looking from the pump. Dis-engaging is done rotating the tubing counter-clockwise from the surface. The pumped oil is then passing through central hollow shaft (towards the suction flange of

SC NEPTUN S.A.

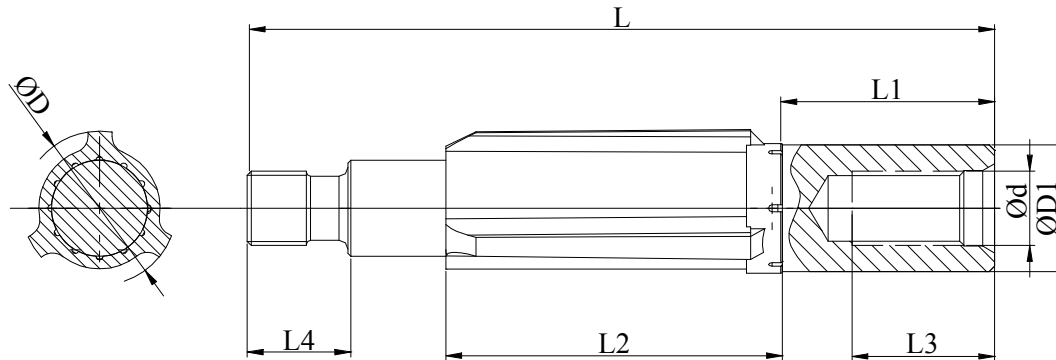
Str. Bobalna; Nr. 57-63; 105600 Campina; Jud. Prahova; ROMANIA;

Tel.+40-244-335651; 335652; 336571; Fax.+40-244-370338; +40-244-336641; E-mail: office@neptun-gears.ro

C

Se utilizeaza in sondele deviate pentru prevenirea spargerii tubingului de catre mufele de imbinare dintre prajinile de pompare.

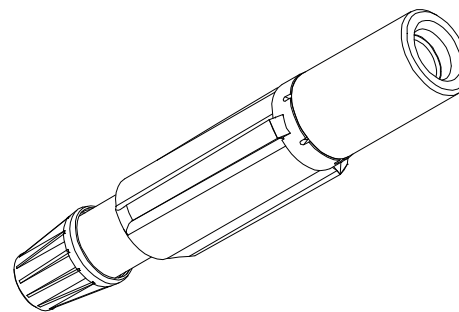
It is used in deviated wells the tubing from being broken by the coupling sleeves between the sucking rods.



Cod Code	Prajina pompare Rod [inch]	Tubing [inch]	Filet cuplare API Thread Ø[inch]	Dimensiuni Dimensions [mm]					
				D	D ₁	L	L ₁	L ₂	L ₄
C 3/4-2 7/8	3/4	2 7/8	1 1/16	57	41	271	77	122	36.5
C 7/8-2 7/8	7/8	2 7/8	1 3/16	57	46	271	77	122	41.3
C 7/8-3 1/2		3 1/2		65.5	55				
C 1-3 1/2	1	3 1/2	1 3/8	65.5	55	276	77	122	47.3
C 1 1/8-3 1/2	1 1/8	3 1/2	1 9/16	65.5	60	276	77	122	53.9

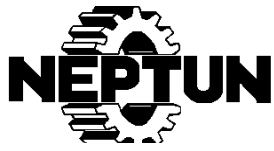
Este format dintr-un ax centror si un protector. Axul centror este din otel aliat cu filete de cuplare a prajinilor de pompare. Protectorul din cauciuc nitrilic sau poliamida este prevazut cu trei aripi care aseaza in interiorul tubingului pastrand departata garnitura de prajini de pompare. Pentru lubrifiere protectorul este prevazut cu caneluri interioare. Protectia filetului exterior la manipulare si transport al axului centror se face cu un protector din PVC.

It consists in a centralizing shaft and a protector. The centralizing shaft is made of alloy steel and has threaded ends for assembling with the sucking rods. The protector is made of nitrilic rubber or polyamid and it aligns inside the tubing by means of three equal wings, keeping the set of sucking rods equally spaced from the wall of the tubing. The protector does not rotate and has inner splines for lubrication. The exterior thread of the centralizing shaft is covered with a PVC cap for protection during handling and transport.



SC NEPTUN S.A.

Str. Bobalna; Nr. 57-63; 105600 Campina; Jud. Prahova; ROMANIA;
Tel.+40-244-335651; 335652; 336571; Fax.+40-244-370338; +40-244-336641; E-mail: office@neptun-gears.ro

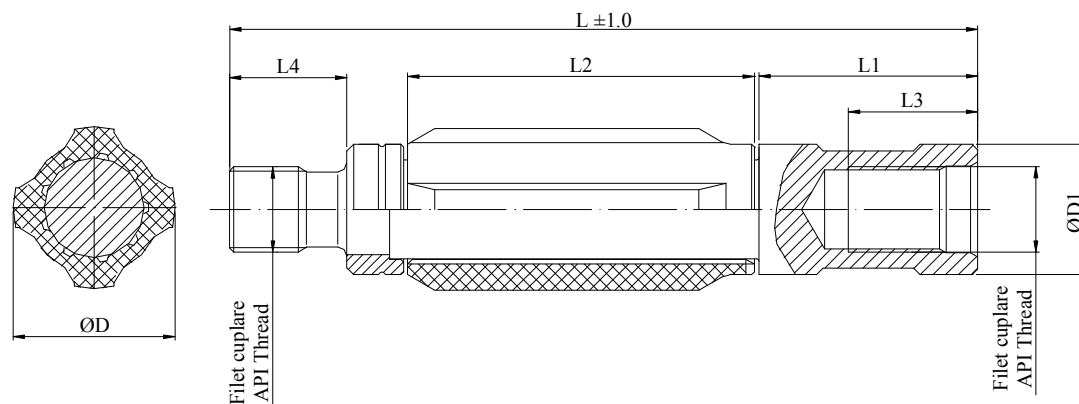


CENTRORI MODERNIZATI MODERNIZED CENTRALIZERS

CM

Se utilizeaza in sondele deviate pentru micșorarea frecarilor si prevenirea spargerii tubingului de catre mufele de imbinare dintre prajinile de pompare.

It is used in deviated wells to minimize the friction and to prevent the tubing from being broken by the coupling sleeves between the sucking rods.



Cod Code	Prajina pompare Rod [inch]	Tubing [inch]	Filet cuplare API Thread Ød[inch]	Dimensiuni Dimensions [mm]					
				D	D ₁	L	L ₁	L ₂	L ₄
CM $3/4-2\ 7/8$	3/4	$2\ 7/8$	$1\ 1/16$	57	41	263	77	122	36.5
* CM $7/8-2\ 7/8$	7/8	$2\ 7/8$	$1\ 3/16$	57	46	263	77	122	41.3
* CM $7/8-3\ 1/2$		$3\ 1/2$		65.5	55				
* CM 1-3 1/2	1	$3\ 1/2$	$1\ 3/8$	65.5	55	276	77	122	47.3
CM 1 1/8-3 1/2	1 1/8	$3\ 1/2$	$1\ 9/16$	65.5	60	276	77	122	53.9

* Available size

Este format dintr-un ax centror, un protector si un capac de sprijin. Axul centror este din otel aliat cu filete de cuplare a prajinilor de pompare. Protectorul din cauciuc nitrilic sau poliamida este prevazut cu patru aripioare care se aseaza in interiorul tubingului pastrand departata garnitura de prajini de pompare. Pentru lubrifiere protectorul este prevazut cu caneluri interioare. Pe capacul de sprijin apasa mufa de la urmatoarea prajina de pompare. Protectorul este incasat intre capacul de sprijin si gulerul mufei axului centror si are un joc axial. Protectia filetului exterior la manipulare si transport al axului centror se face cu un protector din PVC.

It consists in a centralizing shaft, a protector and a sleeve. The centralizing shaft is made of alloy steel and has threaded ends for assembling with the sucking rods. The protector is made of nitrilic rubber or polyamid and it aligns inside the tubing by means of four equal wings, keeping the set of sucking rods equally spaced from the wall of the tubing. The protector does not rotate and has inner splines for lubrication. The protector is mounted between the sleeve and the socket's shoulder with an axial clearance. The exterior thread of the centralizing shaft is covered with a PVC cap for protection during handling and transport.

SC NEPTUN S.A.

Str. Bobalna; Nr. 57-63; 105600 Campina; Jud. Prahova; ROMANIA;
Tel.+40-244-335651; 335652; 336571; Fax.+40-244-370338; +40-244-336641; E-mail: office@neptun-gears.ro



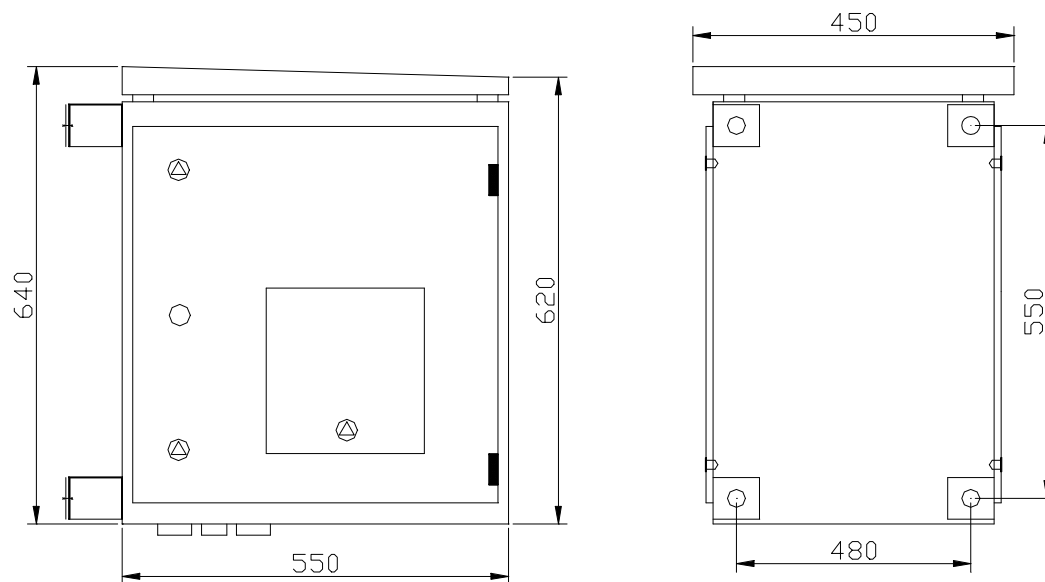
COFRET / CONTROL PANEL

MEMBRU AL METALEUROEST GROUP / A MEMBER OF METALEUROEST GROUP

CAU-0,5 (0,4) / 55 (45)

Cofretul este destinat pentru actionarea motorului pompei unitatii de antrenare tip UARC si UAC pentru extractia titeiului.

The control panel is designed to control the pump motor of the driveheads UARC and UAC for oil extraction.



Fabricat de: SC ELECTROUTILAJ SA CAMPINA
Made by: SC ELECTROUTILAJ SA CAMPINA

CARACTERISTICI TEHNICE / TECHNICAL CHARACTERISTICS

- Tensiune nominala /Supply voltage 500 (400) V±10%
- Tensiunea de comanda / Control voltage 220 V±10%
- Frecventa / Frequency 50 Hz
- Puterea motorului actionat / Motor power. 4÷55 (4÷45) kw
- Gradul normal de protectie / Protection degree IP55 as per SR EN 60529